

# Grasse River Remediation Project Update: In-River Construction to Continue in Spring 2021



PARK AVENUE EAST  
MASSENA, NY 13662

TO: POSTAL PATRON

PRST STD  
ECRWSS  
U.S POSTAGE  
**PAID**  
SYRACUSE, NY  
PERMIT NO. 994



## Grasse River Remediation Project Update: In-River Construction to Continue in Spring 2021



MASSENA, NEW YORK

MARCH 2021

Arconic will resume in-river construction this spring to continue implementing the U.S. Environmental Protection Agency (U.S. EPA) selected remedy for the lower Grasse River. This will be the third year of in-river construction to implement the plan which includes dredging and capping of sediment contaminated with polychlorinated biphenyls (PCBs) in a 7.2-mile stretch of the lower Grasse River. The overall goal of the project is to reduce PCB levels in fish and other organisms in the river for the long-term protection of human health and the environment.

U.S. EPA is the lead agency overseeing the Grasse River remediation project, with involvement from the New York State Department of Environmental Conservation, the New York State Department of Health (NYSDOH), and the Saint Regis Mohawk Tribe Environment Division. Arconic's contractor implementing the work is J.F. Brennan.

This Community Update provides important information about the remediation activities completed in 2020, as well as the planned 2021 construction activities, schedule, and next steps. The major elements of the in-river work are expected to be completed by the end of this year. The 2021 work will primarily include capping between the Route 131 bridge and river mouth along with habitat reconstruction. Covid-19 protocols will continue to be followed and safeguards will be maintained for the protection of site workers and the community.

### FOR MORE INFORMATION



If you have questions or concerns related to removal and capping activities when work is being performed, please contact Arconic's community liaison:

Sue Flynn  
(315) 764-4400  
[Susan.Flynn@arconic.com](mailto:Susan.Flynn@arconic.com)

#### PLEASE REACH OUT TO THESE CONTACTS FOR MORE INFORMATION ABOUT THIS PROJECT:

Young Chang | U.S. EPA Remedial Project Manager | (212) 637-4253 | [Chang.Young@epa.gov](mailto:Chang.Young@epa.gov)  
Larry McShea | Arconic Project Manager | (724) 337-5458 | [Larry.McShea@arconic.com](mailto:Larry.McShea@arconic.com)  
Sue Flynn | Arconic Community Relations | (315) 764-4400 | [Susan.Flynn@arconic.com](mailto:Susan.Flynn@arconic.com)

#### FOR HEALTH-RELATED QUESTIONS, PLEASE CONTACT:

Daniel Tucholski | NYSDOH Bureau of Environmental Exposure | (518) 402-7860 | [Daniel.Tucholski@health.ny.gov](mailto:Daniel.Tucholski@health.ny.gov)

#### ONLINE PROJECT UPDATES AND DOCUMENTATION:

Project information is available on Arconic's Grasse River website at [www.thegrasseriver.com](http://www.thegrasseriver.com).  
U.S. EPA information about the Grasse River Superfund site is available at: <https://www.epa.gov/superfund/alcoa-aggregate>

In 2020, significant in-river construction and habitat replanting activities were performed. Details about capping, dredging, and planting activities that were implemented are summarized here.



#### CAPPING

During 2020, the armored cap (sand, gravel, and armor stone) was completed upstream of the Route 131 Bridge with material placed over 54 acres.



#### DREDGING

Dredging was completed at Snug Harbor in 2020, with 110,000 cubic yards of sediment removed from 20 acres of the river.



#### PLANTING

The initial phase of habitat replanting was completed in 2020. More than 150,000 plants were placed in the river, about 500 trees/shrubs were installed, and almost 4 acres were seeded on land.



#### KEEPING YOU INFORMED

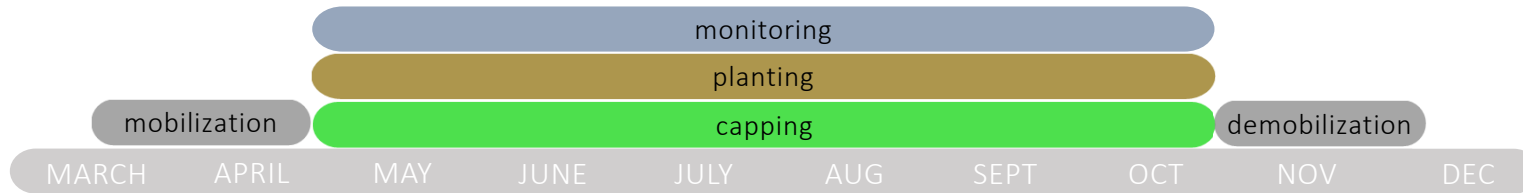
- A narrated presentation detailing the planned 2021 construction work has been posted to the project website ([www.thegrasseriver.com/news.html](http://www.thegrasseriver.com/news.html)) under the "What's New" tab.
- U.S. EPA email distribution list: To receive U.S. EPA new releases and other U.S. EPA site-related updates, send an email to [romanowski.larisa@epa.gov](mailto:romanowski.larisa@epa.gov).
- More information on the overall Grasse River project can be found at [www.thegrasseriver.com](http://www.thegrasseriver.com).



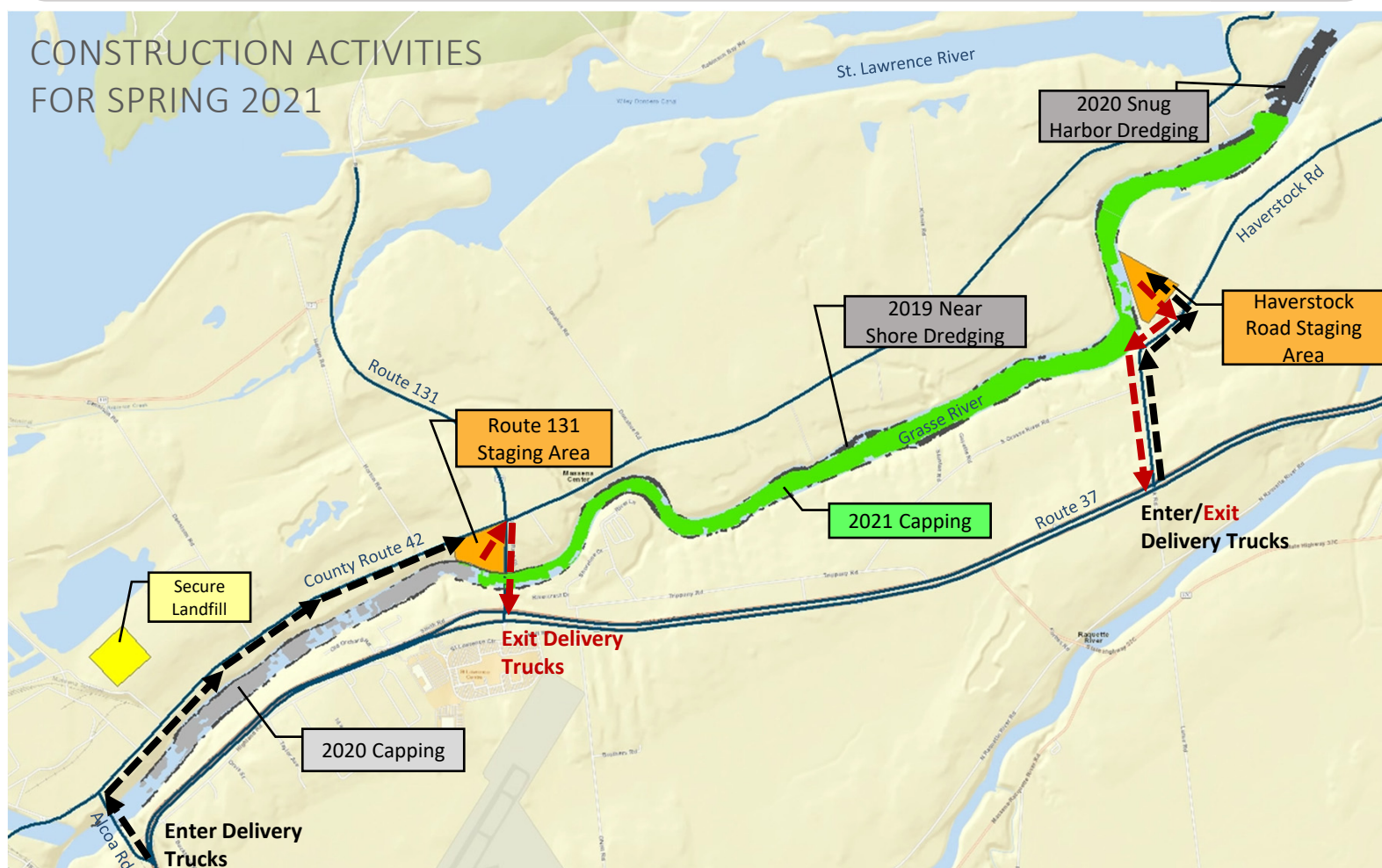
## WHAT TO EXPECT FOR SPRING 2021 CONSTRUCTION ACTIVITIES

- ✓ Capping will resume in the main channel, downstream of the Route 131 bridge to the Grasse River mouth. Capping materials will be stored and managed at staging areas near Route 131 and Haverstock Road.
- ✓ Additional plantings and habitat features (rock clusters, rootwads, and fish cribs) will be installed in the river to support habitat restoration.
- ✓ Additional clean materials will be placed over portions of the 2020 armored cap areas, upstream of the Route 131 bridge.
- ✓ Backfill will be placed over portions of the Snug Harbor 2020 dredge areas and limited additional removal is planned just downstream in coordination with the St. Lawrence Seaway Development Corp. to support use of the new tugboat.
- ✓ Monitoring will consist of air (dust), in-river and intake water (solids), and noise levels. PCB sampling will be done in water during removal and initial capping work and air during handling of potential PCB-containing material.

The timeline below shows the general timing for the 2021 activities, with these major activities targeted to be completed in the river by the end of this year. The capping work will take place 24 hours, 6 days per week.



## CONSTRUCTION ACTIVITIES FOR SPRING 2021



## WHAT TO EXPECT FOR COMMUNITY HEALTH & SAFETY

Community health and safety are extremely important considerations during all phases of the project. The Community Health and Safety Plan is posted on the project website ([www.thegrasseriver.com/community\\_hs.html](http://www.thegrasseriver.com/community_hs.html)) and specific efforts to reduce impacts to the community will include:



### NOISE & LIGHT CONTROLS

Arconic will continue to work with J.F. Brennan to limit and monitor the noise levels, which was effective during 2020 construction. Noise monitoring will be performed surrounding the staging areas and capping operations with results compared against U.S. EPA-approved criteria. Lighting will be needed for worker safety at the staging areas and on the river during capping, which will be 24-hour operations. Lighting will be adjusted to focus on the work areas.



### TRAFFIC SAFETY

As with previous phases of work, the 2021 work will result in an increased level of traffic especially from cap material deliveries. As such, we ask that everyone exercise caution when driving in the vicinity of the project and Route 131 and Haverstock Road Staging Areas. The Alcoa East Plant dock will also be used to support the project. Truck traffic routes for the staging areas are displayed on the figure provided here with the bold dashed black and red lines.



### BOATING & RECREATIONAL SAFETY

There will be a pipeline extending along the shoreline in the river with identified pipeline crossings positioned throughout the river. The pipeline will transport clean capping material from the staging areas and be submerged along the shoreline when in use with a few floating sections near the cap operations as shown in the picture. The pipeline will be marked with orange and white buoys and designated crossing areas will be marked with green and red buoys in the channel. On-river warning signs will also be posted to alert oncoming boating traffic similar to the picture below. Additional information on boater safety can be found on the project website ([www.thegrasseriver.com](http://www.thegrasseriver.com)) as well as NYSDOH's fact sheet that provides river recreation advice during construction ([www.health.ny.gov/environmental/investigations/lower\\_grasse\\_river/](http://www.health.ny.gov/environmental/investigations/lower_grasse_river/)).



### ENVIRONMENTAL MONITORING

Air and water monitoring will be performed during construction. Air monitoring will include dust, and water monitoring will include PCBs and solids. Air and water results will be compared against U.S. EPA-approved criteria and available on the Grasse River website. Note: There will be water cloudiness during in-river work. Visible impacts will return to natural conditions after construction.

## KEEPING SAFE DURING COVID-19 PANDEMIC

The project Covid-19 plan has been reviewed and updated in preparation for this year's efforts. Precautions based on CDC and NYS guidelines will continue, including social distancing, daily health monitoring, hand washing, hand sanitizer/sanitizing wipes, and face masks/coverings. Workers will be structured into "pods" to minimize exposure and must disinfect equipment several times each day.